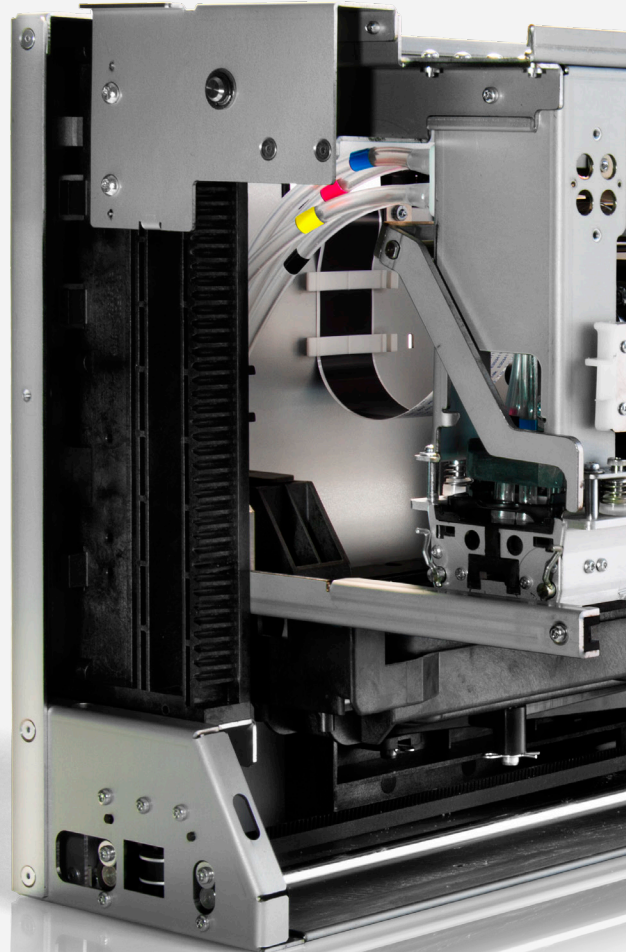


WE ARE R&D

Introducing DuraFlex®

A powerful, low-cost, compact single-pass print solution that opens new market segments and creates new business opportunities for OEMs.



Component or Feature

Specifications

DURAFLEX

DuraFlex Printhead

- A3+ = 324.4 mm (12.77 in.) with 163,840 Nozzles
- A4 = 222.8 mm (8.77 in.) with 112,640 Nozzles
- Four Colors (CMYK) in One Printhead with 2x Redundancy
- User Replaceable

DuraFlex Inks

- Aqueous Pigment Inks
- CMYK
- Fast Drying Ink with No Need for External Drying Capability

Data Pipeline

- Custom FPGA and Embedded Software/Firmware to RIP PDF Files for Printing
- Optional Pipeline for OEM-Supplied RIP and Dot-Level Control of Print Stream to Printhead

DuraFlex Software

- Print Engine Supervisor Software Interface for OEM Control
- Basic Reference Windows 10 Print Driver That Generates PDF Files (Only for 1-Wide Applications)
- Host Utility That Sends PDF Files to the DuraFlex Printer (Only for 1-Wide Applications)
- Job Submission Library for Use with OEM-Supplied RIP (for N-wide applications)

DuraFlex Modules and Consumables

Modules

- Print Module
- Ink Delivery System Module
- Ink Management Module

Consumables

- Printheads
- Inks
- Printhead Wiper Cartridge

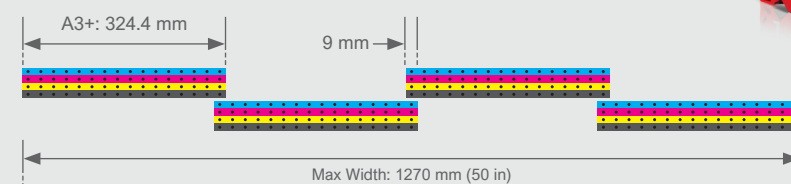
Support

- Memjet Application Engineering
- OEM Training and Documentation
- Customer Service Partner Portal
- Business Development
- Marketing Services

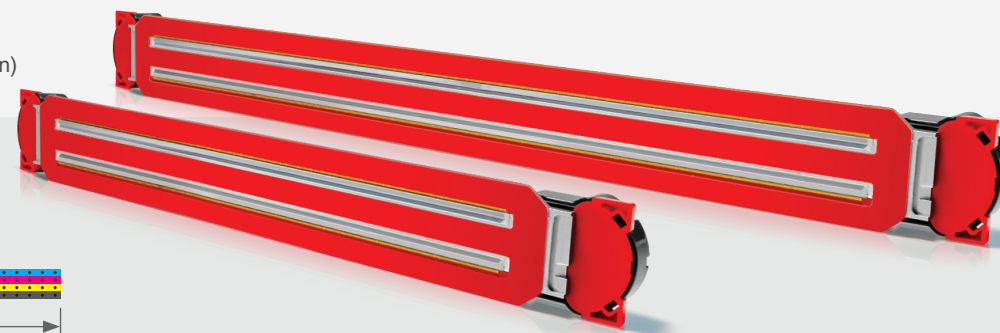
Print Resolution and Speed

- Up to 1600 x 1600 dpi
- Up to 46 m/min (30 in/sec, 150 ft/min)

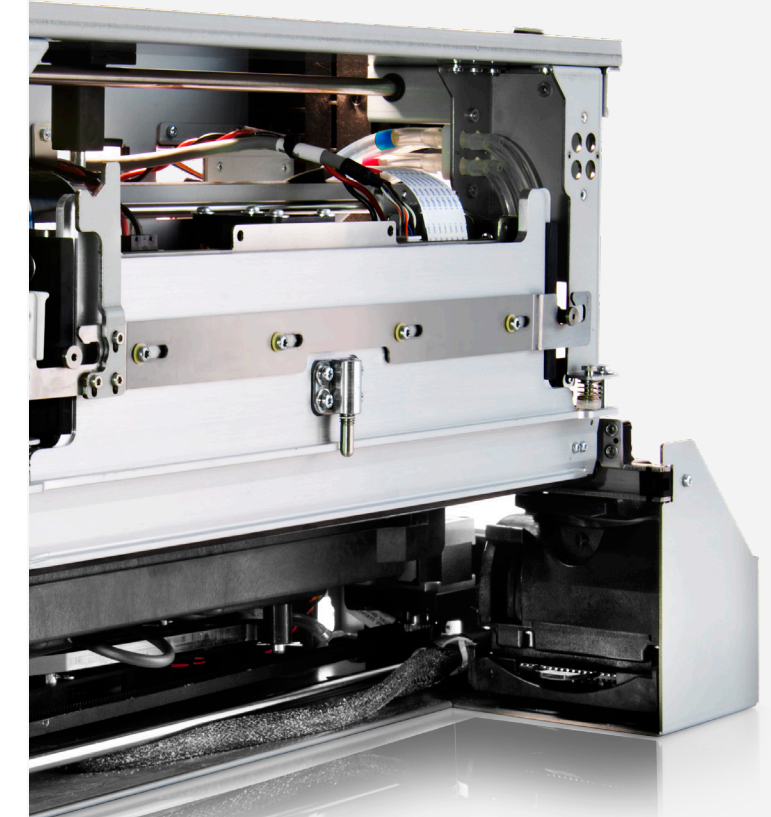
Print Bar Configurations



DuraFlex can stitch up to four A3+ printheads with a 9 mm stitching overlap for a maximum print width of 1270 mm (50 in).



DURAFLEX



Seeing is Believing.

Watch Memjet® technology in action at [Memjet.com/technology/duraflex](https://www.memjet.com/technology/duraflex)

memjet

Beautiful Precision, Simplicity, and Affordability.

The Future of Print:

PRINTING TECHNOLOGY FOR NEW MARKETS AND APPLICATIONS



Printhead

The user-replacable printhead leverages Memjet's revolutionary economical and flexible printhead technology. It is engineered to deliver increased speed, outstanding image quality and longer life in both A4 and A3+ formats. Up to four A3+ printheads can be stitched together to enable wide format printing applications easily.

Print Module

The Print Module manages all functions around printing including datapath, printhead maintenance, and ink delivery. This module houses two power distribution boards that transfer print data and supply power to the printhead. Ink supply components prime the printhead while an integrated wiper system provides automated servicing. Each Print Module will house one printhead, furnishing interfaces to the rest of the printer components.

Ink Delivery System Module

The Ink Delivery System Module draws ink from the bulk ink supply (Ink tanks 500 mL, 2 L, 10 L) and channels the ink to the Print Module for printing. It also filters the ink and provides sufficient storage for hot swap and large job sizes.

Ink Management Module

The Ink Management Module extracts remaining ink from the print module's printhead wiper and printhead cap for disposal in the OEM waste tank.



The Benefits of DuraFlex

DuraFlex is the newest pigment-based print system that offers a unique business model driving hardware and consumables opportunities for our OEMs. It provides multi-color A4 and A3+ printhead options and a modular set of compact components. It enables OEMs to build desktop, light production and cost-sensitive wide format solutions that enable fast, full-bleed color printing with market leading durability and image quality.

Low Cost

Memjet's modular technology provides OEMs the fastest time to market and lowest development costs

- Competitive hardware cost and TCO advantages through longer life printheads
- Lower cost 4 color printhead solution
- Custom applications (Up to 1270 mm / 50 in)

Quality

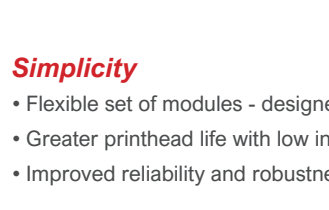
- Image quality consistency across a broad range of run lengths, print environments and substrates
- High optical density and chroma
- Small drop sizes for sharp lines and crisp text
- 2x nozzle redundancy

Speed

- Faster print modes at 27 m/min (18 in/sec) at 1600 x 1600 dpi or 46 m/min (30 in/sec) at 1600 x 954 dpi
- Powerful print pipeline renders highest resolution at speed

Simplicity

- Flexible set of modules - designed for fast integration and ease of use
- Greater printhead life with low intervention rate
- Improved reliability and robustness via pigment ink maintenance system



DuraFlex Configurations

Memjet's DuraFlex technology provides the ultimate flexibility for different media handling and configurations such as cut sheet, roll-to-roll, or belt-driven applications. It delivers speed and simplicity of integration plus cost advantages in a variety of segments and applications.



OEM Support

We have created a proactive approach that goes beyond just support. Our dedicated team has expertise in all the disciplines required to create a state-of-the-art print system, including software, hardware, mechanical design and fluidics. Memjet also provides a wide range of marketing support working closely with our partners to build joint integrated marketing campaigns that amplify their brand and showcase their solutions.

Powering New Markets, Applications and Opportunities



Office & Document

Increase the effectiveness of office communications through color and speed with lower print costs and interventions.



Labels

Increase efficiency, productivity, and flexibility in manufacturing with short-run color labels on demand. Memjet technology powers fast, high-quality color label systems spanning from desktop to narrow-web press applications.



Mailing & Addressing

Generate unmatched high quality/low cost edge-to-edge color envelopes and direct mail. Memjet technology makes it easier to print on wider and thicker envelopes and direct mail media.



Light Production

Print your commercial applications faster and more profitably than ever before. High-speed color printing at 1600 dpi with full variable data and market-leading Memjet print quality.



Packaging

Evolve packaging to create a more personalized interaction between consumers and brands with custom, full-color corrugate, folding carton, and flexible packaging solutions.



Wide Format

With print widths up to 1270 mm (50 in), a wide range of applications and substrates can now be addressed with market-leading image quality, durability, and speed of Memjet printing technology.